

# INTERNATIONAL BUILDING AND TRADE



*Dedication - Assurance - Quality*



**BUILDING AND PUBLIC WORKS –  
RURAL ENGINEERING –  
HYDRAULICS – ENERGY –  
ENVIRONMENT – TERRITORY  
MANAGEMENT - URBAN – RURAL &  
AGRICULTURAL DEVELOPMENT**



**Executive Management: Lot 2135 Land "L" Mènonatin, Cotonou-Benin**  
**Tel: (229) 21 38 38 32 / 95 96 49 00 / 97 39 51 10 / 97 61 90 70 - 10BP1021**  
**contact@ibt-sarl.com /website. www.ibt-sarl.com**



# INTERNATIONAL BUILDING AND TRADE

BUILDING AND PUBLIC WORKS - RURAL ENGINEERING - HYDRAULICS - ENERGY -  
ENVIRONMENT - TERRITORY MANAGEMENT - URBAN - RURAL & AGRICULTURAL DEVELOPMENT

General Management: Lot 2135 Land "L" Mènonin, Cotonou-Benin  
Tel: (229) 21 38 38 32 / 95 96 49 00 / 97 39 51 10 / 97 61 90 70 - 10BP1021  
contact@ibt-sarl.com / website: www.ibt-sarl.com

## OUR MOTO

*Dedication - Assurance - Quality*

### Services Offered

- Buildings and Public Works (Studies & Construction), Construction of Rural Engineering Works, Construction of Hydraulic Works in Drinking Water (AEP) and Village Water Supply (AEV): Water tower, Laying of PVC PEHD pipe, Realization of water pumping stations, Extension of Electrical Networks, Installation of Electricity Meter and Generators.
- Environment, Natural resources management, Community development, Local development, Agricultural development, (Study, Support and training).
- Development of lowlands and other aquatic ecosystems, forest inventory, wildlife and participatory forest management, management of wildlife, transhumance and forest ecosystems, preparation, monitoring, management and evaluation of development plans, projects and programs, support for the management of development projects, land use planning, urban development, etc...
- Agriculture, Renewable energies, Transport, Farming, Training in agricultural technology, Transport of goods, minerals and materials, Promotion of renewable energy, etc.

### Vision

The vision of IBT  
"Let's act together for the development of our communities" is shared by all the staff of the Company, executives, permanent and non-permanent workers.



# SUMMARY

4

## MOTIVATION

5

## WHO ARE WE

6

### **Presentation of the Administration of the Engineering & Design department IBT**

- EXECUTIVE MANAGEMENT
- DIRECTORATE OF ADMINISTRATION, FINANCES AND DEVELOPMENT
- DEPARTMENT OF ACCOUNTING, AUDIT AND TAXATION AND GENERAL MEANS (DCAF)
- DEPARTMENT OF STUDIES AND WORKS IN BUILDING & PUBLIC WORKS (DBTP)
- DEPARTMENT OF ENVIRONMENTAL, NATURAL RESOURCES AND RURAL DEVELOPMENT STUDIES (DERDR.)

7

## FIELDS OF INTERVENTION OF THE DESIGN OFFICE & WORK

8

## Human Resources

9

## ORGANISATION CHART

10

## CAPACITY BUILDING & ISO CERTIFICATION PROCESSES

11

## TECHNICAL REFERENCES

13-

- PROGRAM DEVELOPMENT AND FORMULATION, PROJECTS, DEVELOPMENT PLANS FOR AGRICULTURAL AND LOCAL DEVELOPMENT, INTER-MUNICIPALITY, DECENTRALISATION, LAND USE PLANNING & ENVIRONMENTAL MANAGEMENT

15-

- PROGRAM EVALUATION STUDY AND PROJECTS - SOCIO-ECONOMIC BASELINE STUDIES - AGRICULTURAL DEVELOPMENT SUPPORT STUDIES

17-

- STUDIES OF FORESTRY, WILDLIFE AND AGRO-PASTORAL DEVELOPMENT (Inventory of forest and wildlife stands, Elaboration of forest and wildlife development plans, Management of natural ranges)

18-

- TECHNICAL, ECONOMIC, FINANCIAL AND ENVIRONMENTAL FEASIBILITY STUDIES FOR HYDRO-AGRICULTURAL DEVELOPMENT OF LOWLANDS OR VALLEYS FOR INTENSIVE AGRICULTURAL PRODUCTION AND MONITORING AND SUPERVISION OF THE WORKS

19-

- ENVIRONMENTAL IMPACT STUDIES AND PREPARATION OF THE ENVIRONMENTAL AND SOCIAL MANAGEMENT PLAN (EMSP) AND THE RESETTLEMENT ACTION PLAN (RAP)

20-

- FEASIBILITY STUDIES FOR THE CONSTRUCTION OF TRACKS, GUTTERS, CHANNELS AND OTHER DRAINAGE WORKS

- DESIGN AND EXECUTION OF WATERWORKS (CONSTRUCTION OF WATER TOWERS,

- BOREHOLES, WATER PUMPING STATIONS, SUPPLY OF WATER EQUIPMENT TO SHIPS AND TO COMPANIES OPERATING AND DISTRIBUTING DRINKING WATER)

- DESIGN AND EXECUTION OF CIVIL ENGINEERING WORKS (BUILDING AND ROAD CONSTRUCTION)

22

## PHOTO CATALOG OF SOME OF THE WORK CARRIED OUT

46

## SOME OF THE PARTNERS ON PROJECTS

## MOTIVATIONS

IBT is a limited liability company with a capital of 1,000,000 CFA francs. IBT has been created since 2002 and managed by an Agronomic Engineer of Génue Rural, Water & Forests, holder of a DESS in Project Management and Local Development. Its administration is managed by a technical team that is fairly seasoned, dynamic and very knowledgeable about new management and development techniques.

IBT was created as a result of a number of social facts that inspired its promoter. Thus, the fight against poverty involves generating income from jobs, social policies and emergency measures. Job creation is the only one of its instruments capable of combining economic growth and poverty reduction.

Indeed, it makes it makes the national wealth created by everyone's work sustainable and enables the poor to emerge from their impoverishment situation with dignity. The massive creation of private companies can therefore allow today not only the promoters to self-employment, but to recruit new employees. According to a study by the Directorate of Labour Studies and Policies, 45% of job seekers in Benin are in the construction, services and trade sectors.. Job creation in these sectors would greatly reduce unemployment. It is also an indicator of the niches in which it may be necessary to discourage the orientation of students or encourage the creation of businesses if the market exists.



The preservation of a healthy environment especially in urban centres, agriculture and the protection of environmental resources are also niches for development. Strengthening the organizational and management capacities of local development actors is a necessary condition for the launching of a local economy; since training remains the main condition for development.

Benin and the other countries of French-speaking sub Saharan Africa are developing nations, vast projects under construction in a world where everything remains to be built, where people abound in misery. As a result, there can be no doubt about the urgent need to invest in these sectors.

Likewise, given the impact of recent international financial crises on global economy, Powerful Economic Operators must be born in developing States in order to generate economic growth and promote the socio-cultural and political influence of nations.

Policy makers in Least Developed Countries need to do more to make the economic environment more conducive to the emergence of SMEs/SMIs.

IBT is thus created and is faced with these realities that face Benin and other African countries today.



## WHO ARE WE ?

The IBT Company specialises in studies and works in the field of management and preservation of environmental resources (water-soil forest-fauna), in the field of agricultural development, local development, Intercommunity & Decentralization, in the field of institutional development & formulation, management and evaluation of projects/programs, and finally in the field of equipment and management of rural areas (rural infrastructure, development of water-based structures, water-based construction). It also collaborates with international and regional design offices for responses to ad hoc tenders in Benin and Africa. Its clients are African institutions and ministries, international organizations and agencies. Created in 2002, it has branches and Regional Directorates within the territory of Benin as well as focal points in many African countries. It employs approximately 750 permanent and non-permanent staff of all socio-professional categories. IBT maintains strong partnerships with professional associations in the construction industry and the private sector in general. In fact, it is a member of:

- The National Association of Construction Companies of Public Works and Related Activities (ANECA) since 2002;
- The National Coordination of the Inter-profession of the actors of the construction sector for the development of skills and the emergence of the sector (CONIDA - BTP -DCE) since 2014;
- The National Confederation of Employers of Benin (CONEB) since 2016;
- Benin Committee for Drainage Irrigation (COBID), since 2002;
- The Regional Irrigation and Drainage Association (ARID), since 2002;
- African Federation for Construction Contractors' Associations (AFCCA), since 2015

Its relationship with these professional organizations contributes to capacity building and supports its managers,

engineers and technicians in updating their technical and managerial skills, given the rapid and effective evolution of technological tools and models in the private sector.

### OUR VISION

The vision of IBT

"Let's act together for the development of our communities" is shared by all the staff of the Company, executives, permanent and non-permanent workers.

### OUR VALUES

IBT is guided by its values of honesty, well done job and uncompromising integrity. We are proud to be recognized as an ethical and law-abiding company. As a company, IBT is committed to sustainable development by carrying out hydraulic engineering works and studies on the urban, rural and agricultural environment. Our guiding values within the company are as follows:

- 1- To act with availability, honesty and uncompromising integrity in everything we do;
- 2- To satisfy our customers with quality, superior service and a high sense of commitment and responsibility;
- 3- To value and develop the diverse talents, initiative and leadership of our internal members.
- 4- To share the resources generated among its members while guaranteeing the company's development;
- 5- To earn the admiration of all those associated with IBT in compliance with internationally recognized standards.

These values serve as foundation of IBT's philosophy.

### OUR MISSION

IBT ambition is to make its economic model and research available to Benin and the entire Africa, for the benefit of social, economic and environmental development.

# Presentation of the administration of the IBT design & work office

Committed to the quality of its services, the IBT Design & Works Office, which combines strength and dynamism, is structured into four divisions and departments, subdivided into a number of services. These directorates, departments and services are as follows:

## ■ GENERAL MANAGER (GM)

This division is responsible for the management and strategic direction of the company. It is responsible for directing strategic actions and representing the company at a high level. It also provides technical guidance for the smooth running of a number of projects. It ensures that the company's values are respected.

## ■ DEPARTMENT OF ADMINISTRATION, FINANCE AND DEVELOPMENT (DAFD)

This department is responsible for the administrative, financial and human resources management of the company in accordance with current regulations. It is responsible for the acquisition of new contracts through tenders, expressions of interest and direct agreements, and the negotiation of contracts. It is also responsible for the development of the company and its employees.

- Administration and Human Resources Department (SARH)
- Finance and Collection Department (SFR)
- Administrative Secretariat (SA)

## ■ ACCOUNTING, AUDIT & TAX AND GENERAL RESOURCES DEPARTMENT (DCAF)

This department is responsible for keeping the company's accounting records in accordance with the SYSCOA chart of accounts in force in the WAEMU region. It is responsible for the internal audit of projects in progress and the timely monitoring of operations on projects in progress to ensure customer satisfaction. It is also responsible for the development of the company's logistics, orders and general resources. It is made up of three (3) departments:

- Accounting and Tax Department (SCF)
- Audit, Operations and Projects Supervision Department (SASOP)
- Logistics and General Resources Department (SLMG)

## ■ BUILDING AND PUBLIC WORKS DEPARTMENT (DBTP)

This department is managed by a group of engineers and technicians specialising in Public Works, Hydraulics and Rural Development & Equipment, with several years' experience working for major national and international companies. This department provides services in the field of studies and physical works in Public Works, Hydraulics (boreholes, reservoirs & water towers and pumping stations) and Rural Development & Equipment (development of low lying areas, tracks and engineering structures). It consists of two (2) departments:

- Hydraulics, Electrical Energy and Rural Equipment Studies and Works Department (SETHER)
- Civil Engineering, Roads and Engineering Works Department (SETGRO)

## ■ DEPARTMENT OF ENVIRONMENTAL STUDIES, NATURAL RESOURCES AND RURAL DEVELOPMENT (DERDR)

This department is managed by a group of engineers and geographers who are environmental resource planners, agronomists, sociologists and economists, planners and specialised technicians. It provides services in the field of studies/consultancy for the protection of environmental resources and in the fields of diagnosis, planning and monitoring/evaluation of projects and programs. It consists of two (2) departments:

- Department of Environmental Studies, Natural Resources and Sustainable Development (SERD)
- Rural Development Studies, Planning, Monitoring and Project Evaluation Department (SEDPD)



## SCOPE OF THE IBT STUDY OFFICE

International Building and Trade works in the following areas:

- **BUILDINGS AND PUBLIC WORKS (CIVIL ENGINEERING AND RURAL ENGINEERING) WATER, ENERGY AND SEWERAGE**
  - Agricultural and urban water supply
  - Extension of drinking water network
  - Village water supply, drilling, large diameter wells
  - Drinking Water Supply (Castles and other water reservoirs, Water pumping station, water treatment plant, etc.)
  - Conventional electricity, Photovoltaic solar electricity
  - Sewerage, Roads & Drainage Networks and Engineering
  - Construction of buildings and institutional latrines
- **EQUIPMENT & RURAL CONSTRUCTION**
  - Civil and Rural Engineering
  - Construction of school infrastructure and facilities
  - Roads, Rural Trail and Artwork
  - Hydro-agricultural development, dams and shoals for Hydro-agriculture
- **ENVIRONMENT, SUSTAINABLE DEVELOPMENT & TECHNICAL ASSISTANCE TO PROJECTS AND PROGRAMMES NATURAL RESOURCES, SPACE MANAGEMENT & SUSTAINABLE DEVELOPMENT**
  - Protection and management of watersheds
  - Reforestation of forest galleries
  - Study of physical and human environments
  - Protection of wildlife habitats
  - Measures to protect and restore degraded soils
  - Erosion control (in fields, homes and streets)
  - Hydro-agricultural development, shoals and agro-pastoral dams
  - Forest inventory, characterization of stand and forest dynamics
  - Wildlife inventory, wildlife, transhumance and rangeland management
  - Development of areas with fragile ecosystems (wetlands, aquatic ecosystems)
  - Climate Change, Vulnerability Analysis, Risk Management and Natural Disasters
  - Collection, sanitation, treatment and disposal of waste, domestic and industrial waste water
  - Pollution and Risk Prevention
  - Environmental & Social Impact Assessment, Environmental Management and Management
  - Environmental audit of projects and programs
  - Spatial Planning, Urbanization, Development and Management of Urban Spaces
- **DEVELOPMENT & CAPACITY BUILDING-MANAGEMENT, MONITORING, EVALUATION & TECHNICAL ASSISTANCE FOR PROJECTS, RURAL & URBAN DEVELOPMENT PROGRAMMES**
  - Identification, presentation of concept notes of development projects and programs
  - Planning, development of projects and programs
  - Monitoring and evaluation of development plans, projects and programs
  - Reference study, mid-term evaluation and final evaluation of development projects and programs
  - Technical audit of projects and programs
  - Spatial Planning, Inter-communality and Local Development
  - Agricultural promotion and sector development
  - Collective marketing of agricultural products
  - Organization and structuring of agricultural sector stakeholders
  - Study of agricultural and industrial value chains
  - Training of farmer groups in improved agricultural techniques, administrative and financial management, marketing and marketing systems
  - Organisational and technical diagnosis of village groups and proposed recovery action plan
  - Development of geo-referential databases for monitoring agricultural stakeholders
  - Structuring farmers' organizations for their development
  - Functional literacy of village groups

## HUMAN RESOURCES

A company is first and foremost a group of people brought together, organised and equipped to work together. IBT's human resources are made up of a dynamic group of people committed to achieving the company's objectives.

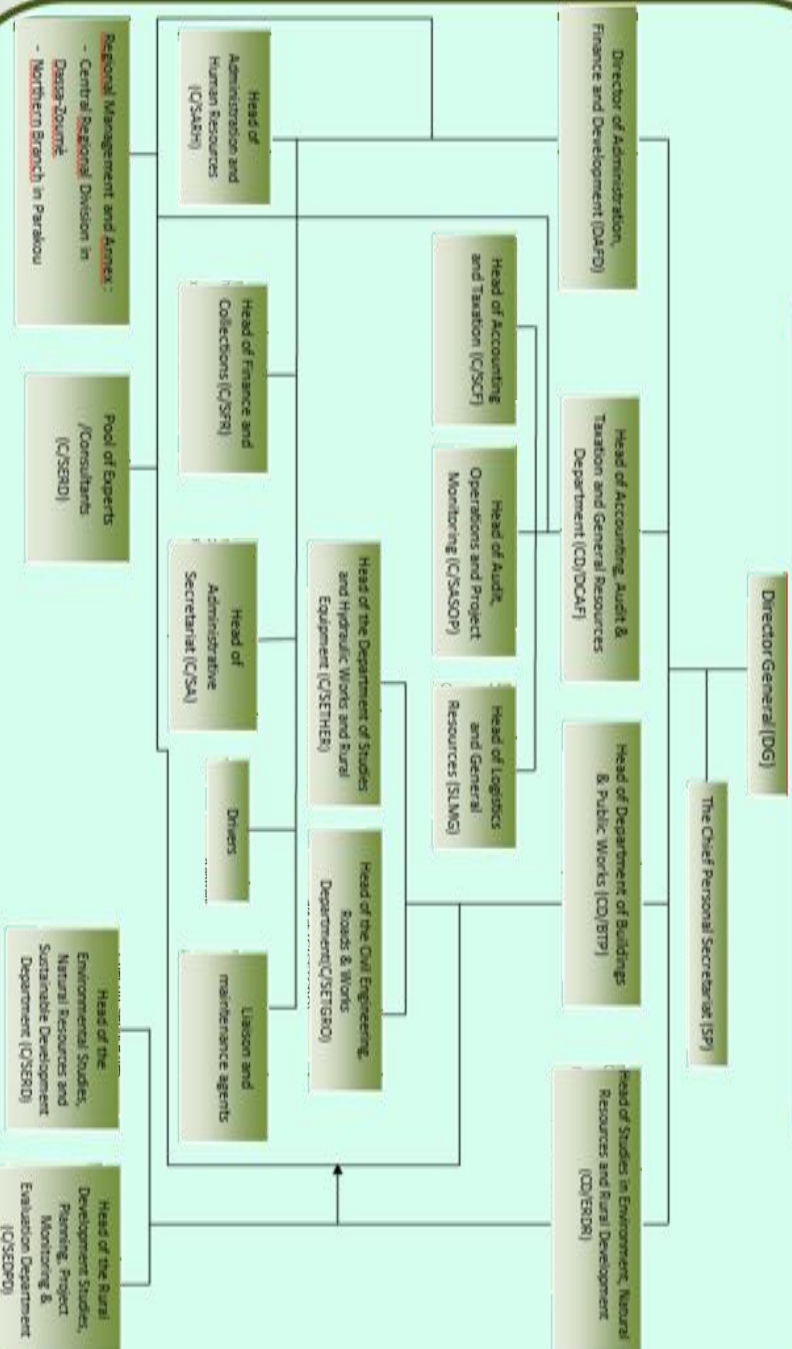
IBT's key personnel are as follows:

- The Managing Director
  - The Head of the Special Secretariat (SP)
- The Director of Finance and Development Administration (DAFD)
  - The Director of Administration and Human Resources (C/SARH)
  - Head of the Finance and Collection Department (C/SFR)
  - Head of Administrative Secretariat (C/SA)
- Head of Accounting, Audit, Tax and General Resources Department (CD/DCAF)
  - Head of the Accounting and Taxes Department (C/SCF)
  - Head of the Audit, Operations and Project Monitoring Department (C/SASOP)
  - Head of Logistics and General Resources Department
- The Head of the Buildings and Public Works Department (CD/BTP)
  - The Head of the Hydraulic, Electrical and Rural Equipment Studies and Works Department (C/SEETHER)
  - The Head of the Civil Engineering, Roads and Engineering Works Department (C/SETGRO)
- Head of the Environment, Natural Resources and Sustainable Development Studies Department (CD/ERDR)
  - Head of the Environment, Natural Resources and Sustainable Development Studies Department (C/SERD)
  - Head of the Rural Development, Planning, Monitoring and Project Evaluation Studies Department (C/SEDPD)

Human resources also include management and operational staff of these directorates, departments and services, as well as high-level consultants.



# ORGANIZATION CHART OF THE IBT DESIGN & WORKS



CAPACITY BUILDING AND ISO CERTIFICATION PROCESS YEAR 2022



# Technical References

## SOME REFERENCES FROM THE IBT DESIGN AND WORKS DEPARTMENT

DEVELOPMENT AND FORMULATION OF PROGRAMS, PROJECTS, DEVELOPMENT PLANS FOR AGRICULTURAL DEVELOPMENT, THE LOCAL DEVELOPMENT, INTERCOMMUNALITY, DECENTRALISATION. REGIONAL PLANNING AND ENVIRONMENTAL MANAGEMENT

Country	YEARS	SOME STUDIES AND WORK PERFORMED	CUSTOMERS/LESSORS
BENIN	2017	Feasibility study and request for proposal for the sub-project Reforestation of mountain slopes in the localities of Porga on the Pendjari Oti -Benin transect, in the framework of the project for the implementation of the management of the Volta Basin Authority (ABV-VSIP)	Volta Basin Authority (ABV-VSIP)/World Bank
BENIN	2017	Elaboration of the Strategic Development Plan of the National Center remote Sensing and Ecological Monitoring (CENATEL), institutional diagnosis management, proposal of strategic organizational orientations and development, implementation of an action plan and mechanism for Monitoring and evaluation	Ministry in charge of the Environment/ CENATEL
BENIN	2017	Feasibility study and development of the "Post Disaster Needs Assessment" (PDNA) 2010 of Benin, for the period 2017-2021	SERHAU-SA/ World Bank
BENIN	2017	Feasibility study and development of the project to strengthen the rural livelihoods and the system of government. Local to the risks and climatic variability of Benin: Climate study of vulnerability assessment analysis as part of project formulation	UNDP/GEF
BENIN	2016	Feasibility study of development, formulation of two: "projet Cross-Border Cooperation for Peace building, Security and Culture for the formed development of the Territory of development formed by the community of Plateau Communes (PCTRpsc-CCP)" and "Capacity Building Project for Private Oil Mills and Cassava Processing Units for development of the Development Territory formed by the community Communes of Plateau (PRECHUM-CCP)" for development Local and agricultural communities of Pobé, Kétou, Adja-Ouéré, Sakété, and Ifagni	Development Support Program Local development (PADL)/ MDGLAAT. European Union
BENIN	2015-2016	Feasibility study and development of the Territory of the community of the Communes of the Plateau (Partnership Development Space) Tage formed by the municipalities of Pobé, Kétou, Adja-Ouéré, Sakété and Ifagni)	Development Support Program Local payment (PADL)/ MDGLAAT
BENIN	2015	Feasibility study for the development of the Territory of the community project community of the Communes of the Plateau (Shared area for development formed by the communes of Aplahoué, Djakotomey and Klouékanmey	Development Support Program Local payment (PADL) /MDGLAAT
BENIN	2015	Feasibility and development study. formulation of two "project Securing Agricultural Income through the Construction of Stores Sins of storage in the agricultural production areas of the territory of Development formed by the community of communes of Couffo North (PSRAM-3CN) "and" Periodic Rehabilitation and Maintenance Project indicates rural desert tracks for the flow of agricultural products of the development territory formed by the community of Municipalities of Couffo Nord (PREPREP-3CN)" for development local authority and Communes of Aphahoué, Djatomey and Klouékanmé	Development Support Program Local payment (PADL)/ MDGLAAT
BENIN	2013-2014	Feasibility and development study, formulation of the Integrated program Adaptation to Climate Change through the Development of Agriculture, River Transport, Tourism, in the Niger Valley In Benin (PIACC-DAT- Niger Valley in Benin) a program of Building resilience in populations against adverse effects Climate change and the development of wetlands from the watershed and Niger River to Benin, according to the policies and national and regional strategies taking into account the orientations Niger Basin Sustainable Development Action Plan (PADD), the Niger Basin Authority and the objectives of the program Water, Climate and Development (WACDEP?2013-2016) of the Council of African Ministers' Council on Water, AMCOW)	NAPA 1 / UNDP & GEF
BENIN	2019	Completion of the third customer satisfaction survey from SONEB	SONEM/ Funding: Budget Autonomous from SONEB



COUNTRY	YEARS	SOME STUDIES AND WORKS DONE	CUSTOMERS/LESSORS
BENIN	2014	Feasibility and development study, formulation of the project rehabilitation and construction of development reservoirs development of Hydro Agriculture in the Niger Basin in Benin (PRCRDH-Alibori/Soto). For submission to the African Facility AfDB Water Caine, an area development project Wetlands of the Niger River watershed in Benin, according to relevant national and regional policies and strategies takes into account the orientations of the PADD of the Niger Basin Authority	(UNDP/ BENIN)
BENIN	2013	Feasibility and development study, formulation of the program Intercommunal for Environmental Management Development from the ZIED NOKOUE (Intermunicipal Eco development Zone formed by the 5 Communes Adjara, Sémé-Kpodji, Porto-Novo, Aguegue and sô-Ava)	PGCBM/ ABE
BENIN	2009	Feasibility and development study, formulation of the program development of the Department of Alibori, for APIDA (period 2009-2013). For the management of local communities, decentralized from the department, development of Socio-economic surveys at the level of 800 households by sampling method for the assessment of the level of poverty within the five communes of the department	association for the promotion Intercommunality in the Department of Alibori (APIDA) and UNDP? UNDP-BENIN
BENIN	2009	Feasibility and elaboration study, formulation of the territory project of the country of Traditions and cultures (Shared Development Space formed by the Communes of Ouidah, Kpomasse and Tori-Bossito) for the promotion of Intercommunality	SEREAU-SA/World Bank
BENIN	2003	Feasibility and development study; formulation of the management plan for the Ramsar 1017 site of the Wetlands of South Benin, (West coast of southern Benin, comprising the municipalities of the departments of Atlantique, Littorale, Mono and Couffo	CARE INTERNATIONAL BENIN/ TOGO
BENIN	2012	Support mission for the establishment of a GIS computerized database on the Communes heritage and the development of a more annual plan for the maintenance and rehabilitation of Communal works for the six (6) communes of the department Hills	National Executing Agency (ANE) of the PDREGDE project/ World Bank
BENIN	2012	Development of the sector plan for the management of fishing and fish farming In the Coastal Zone (all the Communes of South Benin)	PANA1/ UNDP-BENIN
BENIN	2012	Development of the sector plan for the management of agriculture in the Coastal Zone (all the municipalities of southern Benin)	FAAD





**EVALUATION STUDY OF DEVELOPMENT PROGRAMS AND PROJECTS SOCIO-ECONOMIC REFERENCE STUDIES STUDIES IN SUPPORT OF AGRICULTURAL DEVELOPMENT**

COUNTRY	YEARS	SOME STUDIES AND WORK PERFORMED	CUSTOMERS/ DONORS
BENIN	2017	Evaluation of the implementation and updating of the "post Disaster Needs Assessment" (PDNA) 2010 of Benin	SERHUU-SA/ Bank World
BENIN	2016-	Final evaluation of the project to improve drinking water coverage, sanitation and sanitary conditions in schools, health centers and rural communities in Benin (ACCES)	CARE INTERNATIONAL BENIN/ TOGO
BENIN	2016-2017	Final evaluation of the project for the Development of Water Resources and Sustainable Management of Ecosystems in the Niger Basin (PDRGDE) in Benin, preparation of the project completion report and capitalization of achievements	National Executing Agency (ANE) of the PDREGDE project World Bank
BENIN	2015	Assessment of vulnerability and adaptation to climate change in the communes of intervention of the PANA1 project (Commune of Matéri, Ouaké, Malanville, Aplahoué, Savalou, Ouinhí, Adjohou, Bopa and Sô-Awa): Socio-economic surveys of 950 agricultural production units, by the survey method, in order to assess the level of vulnerability of producers	PANA1/UNDP-BENIN
BENIN	2013	Final evaluation of the Land Degradation Restoration Project (PRTD) in agricultural production basins, a mission to strengthen food security in the city of Porto-Novo	FAAD
BENIN	2012	Study on the reference situation of the Support Project for Milk and Meat Filées (PAFILAV): Determination of reference indicators, Development of survey questionnaires, organization of a participatory survey, a sample survey and collection of socio-economic data on the production, marketing and processing of livestock products in the 25 municipalities of the project intervention area and in State livestock farms, design of a project monitoring and evaluation database out of 8,552 stakeholders reached by survey method (breeders, agro-breeders, processors and traders). The 25 municipalities concerned by the study are: Banikoara, Kandi, Gogounou, NiKKI, Kalalé, Péréré, Bembéréké, Tchaourou, Parakou, Péhunco, Bassila, Zdjarrá, Sémé-Podji, Dangbo, Kétou, pobé, Comé, Athiéme, Djakotomey,	MAEP/PAFILAV, AfDB Finance
BENIN	2012	Evaluation of the social intermediation transfer program to municipalities in the water and sanitation sector	SNV-BENIN
BENIN	2015	Study on the evaluation of the state of the implementation and the prospects of the Agreements, conventions and protocols in the field of the Environment and climate change through the study, the preparation and the presentation to the participations of quatre( 4) Communications	LHME/UNB
BENIN	2002	Mission to assess the impacts of the program to restore degraded soils in the commune of Ouessé, a mission to strengthen food security in the commune	MAEP/PROCAD/WAAPP, Bank financing Global
BENIN	2015-2016	Technical Assistance Mission to support the large-scale dissemination of proven technologies with the establishment of 18 agricultural innovation platforms of the Agricultural Productivity Project in West Africa (WAAPP) in the Departments of Zou and hills, sentence2	MAEP/ PROCAD/ PADA, Bank financing Global
BENIN	2015	Technical assistance mission for fiduciary support to beneficiaries selected for Zou competitive shared-cost funds of the Agricultural Development Support Project (PADA) in the departments of Zou and hills, sentence 2	MAEP/PROCAD/PADA, Bank financing Global
BENIN	2015	Technical assistance mission for selected fiduciary support to competitive shared-cost funds of the Support for Agricultural Development (PADA) in the departments of Zou and hills, Phase 2	MAEP/PROCAD/PADA Bank financing Global
BENIN	2007-2008	Technical assistance mission to the MAEP as part of the implementation of component A of the Mono-Couffo Development Support Project diagnostic analysis by carrying out a survey of 1,080 farmers' organizations to identify the situation of reference of the project area (all 12 municipalities of Mono and Couffo)	MAEP/PADMOC, AfDB financing

COUNTRY	YEARS	SOME STUDIES AND WORK DONE	CUSTOMERS/ DONORS
BENIN	2007-2008	Technical assistance mission to the MAEP as part of the implementation of component A of the Modern Poultry Development Support Program in Benin: Reference diagnostic survey on the various actors in the poultry sector in Benin (750 actors in South Benin) for their better structuring with a view to the inter-professional organization in the modern poultry farming sub-sector in Benin (in all the municipalities of South Benin)	MAEP/Director of Livestock/PADAM, National Budget Financing
BENIN	2005	Mission to identify vulnerable groups to be supported by the women's access to credit component of the micro-finance program in Porto-Novo and surroundings: Reference study for the definition of potential targets of the project	LAMD – Benin through the Savings-Credit-Education program
BENIN	2004	Socio-economic analysis mission in the wetlands of southern Benin of the vegetable production sites of the city of Cotonou and surroundings: Reference survey of 620 market gardeners for the start of an urban agriculture development project	LHME/UNE/ Ministry of National Education, FAO
BENIN	2003	Socio-economic Study Mission in the Wetlands of Southern Benin (Grand-Popo, Ouidah, Come): Socio-economic surveys by sampling method among households bordering water bodies in order to assess the impacts of their activities on activities on wetland ecosystems	UNDP/UNFPA/ Mayor From Parakou
BENIN	2009	Mission of technical assistance to the project management in courage in the map of Arts and Trades of the Woman of Parakou for the benefit of the Mayor of Parakou: Recruitment of staff, Diagnosis of professional groups to be supported and Additional feasibility study on the agricultural sectors to be developed identification Data collection and calculation of reference indicators, review of the project's logical framework and implementation of the monitoring-evaluation system; Socio-economic survey of women's groups to assess the support needed to be provided to them by the project	MEPN/ PGFTR, Global shortage
BENIN	2008	Socio-economic study in the areas bordering the classified forest of La Sota, on behalf of the management project of Forests and Riverside Lands (PGFTR) sample survey of 2,500 households bordering the classified forest in order to assess their level of poverty and the impacts of their activities on the preservation of biodiversity	MEPND/UNPPA/ Mayor of Parakou
BENIN	2008	of the Ouème et Supérieurs classified forest and the (PGFTR) sample survey of 2,500 households living near the classified forest in order to assess their level of poverty and the impact of their activities on the preservation of biodiversity	MEPN/PGFTR, Bank World
BENIN	2008	Socio-economic study in the lands bordering the classified forests of Upper Ouème and N'dali on behalf of the project for the Management of Forests and Lands bordering the classified forest in order to assess their level of poverty and the impacts of their activities on the preservation of biodiversity	
BENIN	2009	Socio-economic study in the lands bordering the classified forests of Dassa-Zoumé and Savalou, on behalf of the Management of forests and lands bordering project (PGFTR) sample survey of 2,500 households bordering the classified forest in order to assess their level of poverty and the impact of their activities on the preservation of biodiversity	PGRN
BENIN	2007	Development of a business plan (assembly of technical and economic file of financing or file of investment) for the transformation of the cassava and the marketing of the gari as well as the training in transformation of the cassava, in administrative and financial management for the benefit of the member of the "Ayanwolin" group of Akopkonawa in the commune of Bopa	CASPA/ PADSA2/ DANAIDA





**FORESTRY, FORESTRY AND AGRO-PASTORAL DEVELOPMENT STUDIES**  
(Inventories of wildlife forest stands, Development of forest and wildlife management plans, rangeland management).

COUNTRY	YEARS	SOME STUDY AND WORK DONE	CLIENTS DONORS
GABON	2003	Enumeration of wildlife as part of the wildlife census mission in the Katounga hunting area in GABON: intended for game populations and proposal for a follow-up shooting plan and wildlife in Katounga	LEA/FSJA/UNB-Project-KTR
BURKINA FASO	2004	Enumeration of fauna as part of the ecological inventory and monitoring mission (biomonitoring) of wild ungulate populations in the Sudanian sub-domain of Burkina Faso	HRM Consulting Group
BURKINA FASO	2004	Enumeration of the carding fauna of the hippopotamus and crocodile population inventory mission in the humid regions of the savannahs and clear forests of the Sudanian sub-domain in Burkina Faso	GGH consulting group
BENIGN	2005	Counting of the fauna the card of the mission counting of hippopotamuses in lakes Toho and Doukonta in the Mono river valley and proposed strategy for the promotion of ecotourism	EVP NGO
BURKINA FASO	2008	Enumeration of wildlife as part of the wildlife inventory mission in the savannahs and open forests of the Sudanian sub-domain of Burkina Faso	PPCR
BENIN	2010	Enumeration of wildlife in the Pendjari biosphere reserves and W-Benin cross-border biosphere reserves	POPE/ CENAGREF
BENIN	2010	Enumeration of wildlife as part of the forest mission to enumerate the population of hippopotamuses in the classified forest of Ouémé Supérieur in Affon; on behalf of the riverside forest management project (PGFTG)	HRM CONSULTING GROUP/ PGCRE
BENIN	2010	Study on pastoral management of the buffer zone of W National Park in Niger	HRM CONSULTING GROUP/ PGCRE
BENIN	2006	Study of pasture productivity and proposal of a management plan in the w national park in Niger	HRM CONSULTING GROUP/ PGCRE
BENIN	2012	Identification Study of Adequate Indicator Areas and their Integration into the Ecological Monitoring System of the Environment Agency in Benin	PGCBMC/ ABE (Benin Environment Agency)
BENIN	2016	Agropastoral study and the establishment of regional plans for the development of agropastoral spaces in the intervention area of the Support Project for Milk and Meat Sectors (PAFILAV) and environmental impact study and implementation of the Environmental Management Plan (ESMP) in 33 municipalities in Benin (Banikoara, Kandji, Gogounou, Karimama, Malanville, Nikki, Kalalé, Péréré, Bembéréké, Tchaourou, Parakou, Péhunco, Kouandé, Kérou, Kétou, Pobé, Comé, Djakomey, Aplahoué, Djidja , Savé, Savalou, Abomey-Calavi, Toffo, Torri-Bossito)	PAFILAV/ Ministry of Agriculture, Livestock and Fisheries (MAEP)
BENIN	2014	Study of the implementation and collection of reference data of the ecological monitoring system in the 19 forests under management in Benin	MECGCCRRPNF/Forest Management Program
BENIN	2004	Development in place collection of participatory development of the Badjamé forest in Aplahoué	GRAIB-ONG/ Town hall of Aplahoué
BENIN	2006	Study of forest inventory and development of the management plan for forest management in the middle	PESE/ DGE/ Ministry of Mines, Energy and WATER/ World Bank
BENIN	2006	Forest inventory study and development of the management plan for the Igbodja forest in the Commune of Savé	LEA/UAC/MESFP
BENIN	2003	Study of the pastures for the evaluation of the carrying capacity and the pastoral value with a view to the development of an ecological management plan for the natural rangelands of the Lonkly forest	LEA/ UAC/ MEN
BURKINA FASO	2004	Mission to assess the carrying capacity of cattle herds and develop the management plan for grazing areas in the savannahs and open forest of the Sudanian sub-domain of Burkina Faso	HRM Consulting Group
BENIN	2018	Study for the development of a reforestation project for the benefit of ONAB for submission to the AfDB	ONAB/ Funding: ONAB budget for the 2018 financial year

COUNT RY	YEARS	SOME STUDIES AND WORKS CARRIED OUT	CUSTOMERS BACKERS
BENIN	2014-2015	Development of forest management fact sheets on forestry techniques and forest management and a practical guide on beekeeping	MEGCCRPRNF/Benin Forest and Riparian Territories Management Program (PGFTR)
BENIN	2007	Elaboration of National Directorates for Forest Management in Benin, on behalf of the Riverside Forest Management and Terroirs Project (PGFTR)	PFSE/DGE/ Ministry of Mines, Energy and Water/ World Bank
BENIN	2008	Elaboration of a management plan for agro-forest areas as part of the inventory work of classified forests of Goungoun and Goroubi, on behalf of the project of Management of Riparian Forests and Soils (PGFTR)	MEPN/ PGFTR
BENIN	2003	Organisational and institutional audit of Producer Organisations (POs) involved in the management of natural resources in the municipalities of Kpomassé, Allada and Tori, within the framework of the mission of diagnosis and technical support for the development and implementation of annual and multiannual participatory plans for strengthening the technical and organizational capacities of these POs	PGTRN
BENIN	2003	Technical assistance to REDAD for the preparation of an indicative programme for the development of the rice sector in the departments of Mono and Couffo	REDAD
BENIN	2004	Elaboration of the participatory management plan of the forest of Badjamé in Aplahoué	GRAIB-ONG/ Town Hall of Aplahoué
BENIN	2008	Forest inventory of classified forests of Dassa-Zoumé and Savalou, description of stands and technical requirements for forest management	PGFTR/ World Banque
BENIN	2003	Inventory of grazing and transhumance areas for the elaboration of the Igbojia forest management plan in the municipality of Savé	LEA/UAC/MESFP
BENIN	2016-2017	Technical, economic, financial and environmental feasibility study for the development (APD/DAO) for the development of 12 hectares of market-based shoals in four (04) communes of Alibori (Banikoara, Gogounou, Kandi and Ségbana), and preparation of tender documents on behalf of URP B/A	Regional Union of Producers of Borgou and Alibori, Swiss Cooperation







**■ TECHNICAL, FINANCIAL AND ENVIRONMENTAL FEASIBILITY STUDIES ON THE HYDROAGRICULTURAL DEVELOPMENT OF THE FUNDS OR VALLEYS FOR INTENSIVE AGRICULTURAL PRODUCTION AND MONITORING/SUPERVISION OF WORKS**

COUNTRY	YEARS	SOME STUDIES AND WORKS CARRIED OUT	CUSTOMERS BACKERS
BENIN	2015-2016	Technical feasibility study and monitoring/supervision of the rehabilitation work of five (5) multi-purpose agro-pastoral dams with development of 1000 ha of shoals in the communes of Sinendé , Gogounou, Banikoara, Kérou and Kandi	APRM/PDREGDE Niger Basin Authority/ World Bank
BENIN	2015-2016	Technical, economic, financial and environmental feasibility study (ODA/DAO) for the sustainable development of 200ha of shoals in the municipalities of Banté, Djougou, Banikoara, and N'Dali and preparation of packages of offers on behalf of the Agency for the Promotion of Hydro-Agricultural Development (APAH-SA)	APRM/APAH National Budget
BENIN	2013-2014	Technical, economic, financial and environmental feasibility study (APD/DAO) for the development of Kankini Séri bottoms in the municipality of Materi, in Benin and the construction of water mobilization works with the preparation of tender documents and monitoring of works according to UNDP and GEF procedures, Development mission of priority action for agricultural management of wetlands according to the recommendations of the Intergovernmental Panel on Climate Change (IPCC) and national and regional priorities on adaptation to climate change, including the Second National Communication on Climate Change and the objectives of PANA projects	PANA 1/ UNDP & GEF
BENIN	2013-2014	Technical, economic, financial and environmental feasibility study (APD/DAO) for the development of Kankini Séri bottoms in the municipality of Materi, in Benin and the construction of water mobilization works with the preparation of tender documents and monitoring of works according to UNDP and GEF procedures, Development mission of priority action for agricultural management of wetlands according to the recommendations of the Intergovernmental Panel on Climate Change (IPCC) and national and regional priorities on adaptation to climate change, including the Second National Communication on Climate Change and the objectives of PANA projects	PANA 1/ UNDP & GEF
BENIN	211-2013	Technical, economic, financial and environmental feasibility study (APD/DAO) for the development of the Dahomey lowland and monitoring of works in the municipality of Abomey-Calavi in south Benin	PAFIRIZ project/ Bêlge technical cooperation/ European Union
BENIN	2011-2012	Technical, economic, financial and environmental feasibility study (ODA/DAO) for the development of the Sarika valley and monitoring of works in the municipality of Toucountouna in the north of Benin	
BENIN	2011-2013	Technical, economic, financial and environmental feasibility study (APD/DAO) for the development of the Sarika valley and monitoring of the works, in the municipality of Toucountouna in north Benin	
BENIN	2012-2013	Technical, economic, financial and environmental feasibility study (ODA/DAO) for the development of the Kpakpaza shoal and monitoring of the works, in the municipality of Glazoué in central Benin	
BENIN	2011	Technical, economic, financial and environmental feasibility study (ODA/DAO) for the development of the Tokanmè Aliho and Tokanmè Kpodji shoals and monitoring of the works in the municipality of Klouékanmè	Hydraulics and Water Control Laboratory
BENIN	2005	Technical, economic, financial and environmental feasibility study (ODA/DAO) for the development of the Eglimè/Kokouhoué lowland for rice growing in the municipality of Aplahoué (Comprehensive ODA study and development of DAO)	GRAIB/ PSAN- PLAN BENIN
BENIN	2018	Study of definition and development of a mechanism for sustainable explanation of the infrastructures and development of the PAIA- VO	PAIA-VO/ APRM AfDB Financing (ADF Loan)
BENIN	2019	Control and monitoring of development work on market garden perimeters in the municipalities of the base and middle valley on behalf of PAIA-VO	PAYE-VO/ MAEP Financing: African Development Fund (ADF loan)
BENIN	2019	Annual surveys to monitor the achievement of the indicators of the Food Production Support and Resilience Building Project in the departments of Alibori, Borgou and Collines (PAPVIRE-ABC)	PAPVIRE-ABC/ APRM Financing: Global Program for Agriculture and Food Security/ African Development Bank

COUNTRY	YEARS	SOME STUDIES AND WORKS CARRIED OUT	CUSTOMERS BACKERS
MALI	2007	Comprehensive technical feasibility study and monitoring for the construction of a hydro-agricultural dam in the Timbuktu region and a rainwater collection and drainage basin in the Gao region of Mali	SC-Mali PLCE-BEN
BENIN	2006	Monitoring and technical control of the construction of masonry channels and hydraulic connections with supply and installation of motor pump unit for the development of the Eglime/ Kokouhoué shoal in the municipality of Aplahoué	GRAIB / PSAN- PLAN-BENIN
BENIN	2006	Monitoring and technical control of the construction of a well and three (3) storage tanks for the development of the bottom of Eglime/ Kokouhoué in the municipality of Aplahoué	GRAIB / PSAN- PLAN-BENIN
BENIN	2013	Fiduciary support for beneficiaries of development projects Lot 3: Zou-collines, 920 hectares, phase 1 (Support to the ProCAD Management Unit, strengthening the fiduciary management capacity of producer organisations, mentoring and advisory support for the implementation of irrigation infrastructure development/rehabilitation projects, financial monitoring, data collection and beneficiary database design)	ProCAD/ APRM
BENIN	2015	Fiduciary support for beneficiaries of development projects Lot 3: Zou-collines, 920 hectares, phase 2(Support to the ProCAD Management Unit, strengthening the fiduciary management capacity of producer organisations, mentoring and advisory support for the implementation of irrigation infrastructure development/rehabilitation projects, financial monitoring, data collection and beneficiary database design)	ProCAD/ APRM

### ENVIRONMENTAL IMPACT ASSESSMENT AND IMPLEMENTATION OF THE ENVIRONMENTAL AND SOCIAL MANAGEMENT PLAN (ESMP) AND RESETTLEMENT ACTION PLAN (RAP)

COUNTRY	YEARS	SOME STUDIES AND WORKS CARRIED OUT	CUSTOMERS BACKERS
MALI	2017	Environmental and Social Impact Assessment with Elaboration of the Environmental and Social Management Framework (ESMP) of the sub-projects of the Support Project for Milk and Meat Sectors (PAFILAV)	Ministry of Agriculture/ PAFILAV/AIDB
BENIN	2015	Environmental and Social Impact Study with Development of Social Environmental Management Plan (ESMP) and Resettlement Action Plan (RAP) for paving and sanitation works and streets in the city of Cotonou, section Labour Exchange Zongo Sheep Market and Section Ex Embassy of Chad- Sénadé	MUHA/ AGETUR/ PAURAD/ World Bank
BENIN	2008	Environmental and Social Impact Study with Elaboration and follow-up of the implementation of the Environmental and Social Management (ESMP) plan of the project to create a site for the treatment of household solid logs in Hounvé in the municipality of Adjara	African Foundation for Agricultural Development
BENIN	2009	Environmental and Social Impact Assessment with Elaboration and monitoring of the implementation of the Environmental and Social Management Plan (ESMP) of the reforestation project of the shore of Lake Azili in Agonvé in the municipality of Zagnanado	Development Intervention Centre
BENIN	2012	Environmental and Social Impact Assessment with Elaboration and monitoring of the implementation of the Environmental and Social Management Plan (ESMP) of the development project of the Bas-Fond of Kouarfa on 13 ha	PAFIRIZ project/ Bélgé Technical Cooperation/ European Union





COUNTRY	YEARS	SOME STUDIES AND WORKS CARRIED OUT	CUSTOMERS BACKERS
BENIN	2013	Environmental and Social Impact Assessment with Elaboration and monitoring of the implementation of the Environmental and Social Management Plan (ESMP) of the Sociogbo Low Land development project on 18 ha	PAFIRIZ project/ Bèlge Technical Cooperation/ European Union
BENIN	2013	Environmental and Social Impact Assessment with Elaboration and monitoring of the implementation of the Environmental and Social Management Plan (ESMP) of the Sociogbo Low Land development project on 12 ha	PAFIRIZ project/ Bèlge Technical Cooperation/ European Union

## ■ FEASIBILITY STUDY2 FOR RUNWAY, CULVERT, GUTTER AND OTHER DRAINAGE WORKS

COUNTRY	YEARS	SOME STUDIES AND WORKS CARRIED OUT	CUSTOMERS BACKERS
BENIN	2009	Technical feasibility study and monitoring of the redevelopment work of the Dogbo-Abomey-Kpdaha trail with construction of crossings over 6km (lot 1)	(URP-Mono / Couffo)
BENIN	2010	Technical feasibility study and monitoring for the construction of the storm water drainage works (drainage lots, gutter) in Lobogo	Bopa City Hall
BURKINA FASO	2009	Technical feasibility study, DAO development, monitoring of the execution of the project of drainage of access roads inside the Sakoinzé and Sytenga livestock farms over 75 km	Ministry of Animal Resources of Burkina Faso
TOGO	2012	Complete technical studies (Civil engineering technical studies and environmental impact study with elaboration of an ESMP), the Elaboration of Tender Documents, supervision and monitoring of the work of reprofiling of track and construction of sewers of reinforced concrete for the drainage of storm water, on 23 km in the districts of Bé, Anêho and Sanvee- Conджи	Ministry of Water, Sanitation and Village Hydraulics
BENIN	2019	Elaboration of the Plan Direction of Wastewater Treatment of the cities of Abomey and Bohicon	SONEB Financing: Kingdom of the Netherlands



**STUDIES AND IMPLEMENTATION OF HYDRAULIC WORKS (CONSTRUCTION OF WATER TOWERS, DRILLING, WATER PUMPING STATIONS, SUPPLY OF WATER MATERIALS TO SHIPS AND COMPANIES OPERATING AND DISTRIBUTING DRINKING WATER)**

COUNTRY	YEARS	SOME STUDIES AND WORKS CARRIED OUT	CUSTOMERS BACKERS
BENIN	2014	Execution study, self-monitoring and realization of hydraulic construction works (water tower pipe, group shelters, pumping station (submerged pump and generator), hydrants) in the profile of the communities of Korontièrè, in the commune of Boukoubé	Atacora Water Service/ Ministry of Water and Energy
BENIN	2013	Execution study, self-monitoring and realization of hydraulic construction works (water tower pipes, group shelters, pumping station (submerged pump and generator), hydrants) for the supply of drinking water in Covè in the municipality of Zou	MEE/ DDEE- Zou-collines/ Zou Water Service
BENIN	2013	Execution study, self-monitoring and realization of hydraulic construction works (water tower pipes, group shelters, pumping station (submerged pump and generator), hydrants) for the supply of drinking water of Akodèha in the municipality of Come	MEE/ DDEE- Zou-collines/ Mono Water Service
BENIN	2013	Execution study, self-control and realization of hydraulic construction works (water tower pipe, group shelters, pumping station (submerged pump and generator), hydrants) in the town of Kérou	MEE/ DDEE- Zou-collines/ Atacora Water Service
BENIN	2010	Execution study, self-monitoring and realization of hydraulic construction works (water tower pipes, group shelters, pumping station (submerged pump and generator), hydrants) for the benefit of the communities of Birni, in the municipality of Kouandé	Atacora Water Service/ Ministry of Water and Energy
BENIN	2012	Execution study, self-monitoring and realization of hydraulic construction works (water tower pipes, group shelters, pumping station (submerged pump and generator), hydrants) in the municipality of Ouassa-Péhunco	Ministry in charge of Water/ UNDP
BENIN	2016	Acquisition and supply of water supplies to vessels using the Autonomous Port of Cotonou	Autonomous Port of Cotonou
BENIN	2005-2009	Realization of several water drilling in the departments of Mono, Couffo for the supply of drinking water and for the development of agricultural hydro	Plan Benin, NGO belge PROTOS

**DESIGN AND CONSTRUCTION OF CIVIL ENGINEERING (BUILDING CONSTRUCTION)**

COUNTRY	YEARS	SOME STUDIES AND WORKS CARRIED OUT	CUSTOMERS BACKERS
BENIN	2006-2009	Construction of several workshops for the transformation of cassava into gari for groups of women transforming cassava into gari dand le Mono and couffo (Bopa, Comè, Dogbo)	APRM/CASPA2/ DA-NIDA
BENIN	2002-2009	Construction of several class modules in the departments of Ouèmén and the hills (Ajo’houn, Bonou, Dassa, Bantè and Savalou)	Ministry of Primary Education International NGOs
BENIN	2002-2009	Construction of several 3- and 4-cabin waterproof pit latrine modules in Mono (Bopa, Houéyogbé, Comè Lokossa)	Ministère de la santé ONG Belge PROTOS
BENIN	2004-2008	Réalisation des forages de puits dans plusieurs communes du Mono (Houéyogbé, Comè, Bopa)	Belge PROTOS
BENIN	2002-2008	Construction de plusieurs bâtiments à usage d’habitation et de bureau	Privates





COUNTRY	YEARS	SOME STUDIES AND WORK DONE	CLIENTS/LESSORS
BENIN	2019 - 2021	Construction of 24 drinking water supply systems (construction, rehabilitation and extension of village water supply systems, construction of boreholes in Benin)	ANAEPMR / Presidency of the Republic Financing : National budget
BENIN	2019 - 2021	Construction of 32 boreholes in 11 departments of Benin	ANAEPMR / Presidency of the Republic – Financing : Kingdom of the Netherlands
BENIN	2019 - 2021	Primary servicing of the construction site for social housing in Ouedo in the town of Abomey-Calavi, Lot 3 : Development of the primary drinking water supply network	MCVDD / Funding: National Budget
BENIN	2018	Supply of materials and execution of civil engineering works and installation of hydraulic and electromechanical equipment for the korontière borehole within the framework of the reinforcement of the Drinking Water Supply System of the of Boukounbé town	SONEB / Financing: Cotonou Port Authority budget
BENIN	2018	Repair of the metal framework of the lighthouse of the Autonomous Port of Cotonou	PAC / Financing Cotonou Port Authority budget



# CATALOGUE OF PHOTOS OF SOME OF THE WORK CARRIED OUT

DEVELOPMENT OF A NATIONAL DATABASE FOR THE OIL PALM SECTOR IN BENIN, MINISTRY OF AGRICULTURE, POLE 6 REGIONAL AGRICULTURE DEVELOPMENT AGENCY, YEAR 2022-2023



**ENVIRONMENTAL AND SOCIAL IMPACT STUDY (EIES) OF THE IMPLEMENTATION OF THE PLAN FOR THE DEVELOPMENT OF MASSI, KOTO AND AKPE FORESTS IN BENIN, NATIONAL TIMBER OFFICE YEAR 2022.**



**TECHNICAL AUDIT OF THE SUPPORT PROJECT FOR  
AGRICULTURAL DEVELOPMENT IN THE HILLS (PADAC) OF  
BENIN, MINISTRY OF AGRICULTURE, YEAR 2022**





**ENVIRONMENTAL AND SOCIAL IMPACT STUDY OF THE  
CULTURAL ARENA CONSTRUCTION PROJECT IN PARAKOU-  
KOUANDE, OUIDAH AND LOKOSSA, BENIN, SIRAT, YEAR 2022**



**TECHNICAL FEASIBILITY STUDY FOR THE PREPARATION OF THEAPS, ASP & DAO AND SUPERVISION OF THE EXECUTION OF HYDROAGRICULTURAL DEVELOPMENT WORKS FOR RICE AND MARKET GARDEN PRODUCTION ON SEVERAL SITES IN BENIN, MINISTRY OF AGRICULTURE, YEAR 2021-2023**



**DEVELOPMENT OF A REFORESTATION PROJECT FOR THE BENEFIT OF THE NATIONAL TIMBER OFFICE IN BENIN, AFRICAN DEVELOPMENT BANK, MINISTRY IN CHARGE OF AGRICULTURE, YEAR 2020**



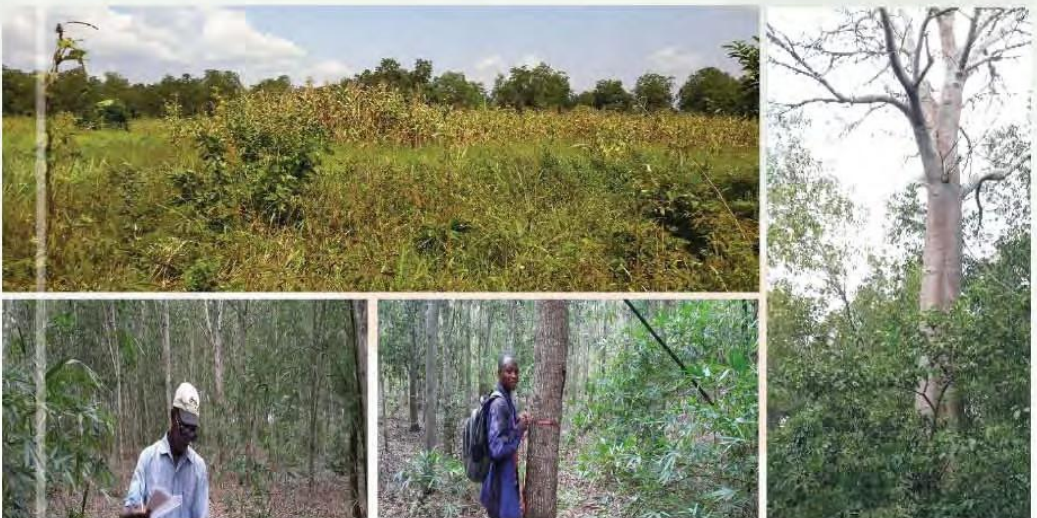
**MONITORING AND EVALUATION OF ACHIEVEMENT OF PRODUCTIVITY INDICATORS FOR THE PROJECT TO SUPPORT FOOD PRODUCTION AND STRENGTHEN RESILIENCE IN THE DEPARTMENTS OF ALIBORI, BORGOU AND COLLINES IN BENIN (PAPVIRE-ABC), YEAR 2019, 2020, 2021 AND 2022.**



**SOCIO-ECONOMIC BASELINE STUDIES AROUND THE CLASSIFIED FORESTS OF OUEYOU-BONOUE, OUEME SUPERIEUR-N'DALI AND ALIBORI SUPERIEUR, DAN, OUEME BOUKOU, DOGO-KETOU, TCHAUROU TOUI-KILIBO, AGOUA ET LOGOZOHE, WACCA-BENIN CLASSIFIED FORESTS PROJECT/MINISTRY IN CHARGE OF SUSTAINABLE DEVELOPMENT, FINANCED BY WORLD BANK, YEAR 2022.**



**FOREST INVENTORY AND DEVELOPMENT OF SIMPLIFIED PARTICIPATORY MANAGEMENT PLANS (PAPS) FOR COMMUNAL PLANTATIONS, COMMUNAL FOREST DEVELOPMENT AND MANAGEMENT PROJECT (PAGEFCOM) / MINISTRY IN CHARGE OF DEVELOPMENT), YEAR 2021**



**EXTENSION OF AN UNDERGROUND LOW-VOLTAGE LINE TO SUPPLY ELECTRICITY TO THE PUMPING STATIONS OF THE DRINKING WATER NETWORKS AT OUEDO SOCIAL HOUSING SITE IN BENIN, FINANCED BY BOAD, SOCIETE IMMOBILIERE URBAIN (SIMAU), YEAR 2021-2022**



**EXTENSION OF A MEDIUM AND LOW VOLTAGE LINE TO SUPPLY ELECTRICITY TO THE PUMPING STATIONS OF THE DRINKING WATER NETWORKS OF SEVERAL LOCALITIES IN THE SOUTH OF BENIN (AGENCE NATIONALE D'APPROVISIONNEMENT EN EAU POTABLE EN MILIEU RURAL, BENIN), YEAR 2021-2022**



**SUPPLY AND INSTALLATION OF THREE 120 TO 160 KVA GENERATORS FOR THE RELAY POWER SUPPLY TO THE PUMPING STATION FOR THE DRINKING WATER NETWORK AT THE OUEDO SOCIAL HOUSING SITE IN BENIN, FINANCED BY BOAD, SOCIETE IMMOBILIERE URBAIN (SIMAU), YEAR 2021-2022**



**TECHNICAL FEASIBILITY STUDY AND MONITORING AND CONTROL OF THE IMPLEMENTATION OF THE SOLAR PHOTOVOLTAIC SYSTEM FOR WATER PUMPING AS PART OF THE HYDRO-AGRICULTURAL DEVELOPMENT OF THE KOMDE SITE IN THE OUAKE COMMUNE IN NORTHERN BENIN, LOCAL PROJECT FUNDING, OUAKE TOWN COUNCIL, YEAR 2021-2022**



CONTROL AND SUPERVISION OF THE EXECUTION OF WORKS TO BUILD PHOTOVOLTAIC SOLAR SYSTEMS FOR PUMPING WATER AS PART OF THE DEVELOPMENT OF MARKET GARDEN AREAS IN THE COMMUNES OF ABOMEY CALAVI, SÈMÈ-KPODJI, DANGBO, AKPRO-MISSERETE, BONOU, AFJOHOUN, COVE, ZANGNANADO, A PROJECT TO SUPPORT AGRICULTURAL INFRASTRUCTURE IN THE OUÉMÉ VALLEY IN BENIN MINISTRY OF BENIN WATER, FINANCED BY THE AFRICAN DEVELOPMENT BANK YEAR 2021-2023



**PRELIMINARY DESIGN, HYDROGEOLOGICAL AND GEOPHYSICAL STUDIES AND DETAILED DESIGN OF THE PROJECT TO REINFORCE THE DRINKING WATER SUPPLY SYSTEMS OF 21 TOWNS: ALLADA, GLO-DJIGBE, OUIDAH, SO-AVA, TOFFO, TORI BOSSITO, ADJOHOUN, BONOU, DANGBO, AKPRO-MISSERETE, AVRANKOU, IFANGNI, POBE, AJA-OUERE, KETOU, KANDI, MALAVILLE, SEGBANA, ND'ALI, PERERE, SINENDE AND THEIR NEIGHBOURHOOD, MINISTRY OF BENIN WATER, YEAR 2022-2023**



**PROJECT MANAGEMENT MISSION FOR THE PROJECT TO STRENGTHEN THE DRINKING WATER SUPPLY SYSTEMS OF THE TOWNS OF BOUKOUMBE, COVE AND ZANGNANO AND THEIR SURROUNDINGS, NATIONAL WATER COMPANY OF BENIN / MINISTRY IN CHARGE OF BENIN WATER. YEAR 2022-2023**

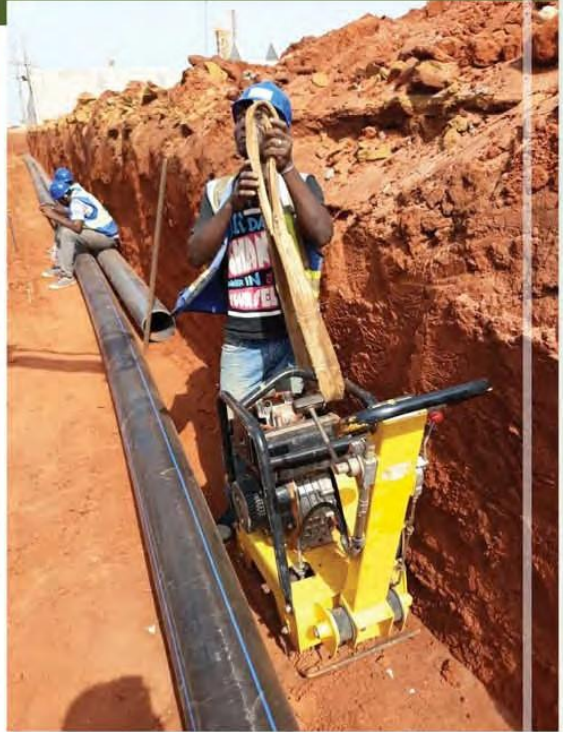




**PROVISIONAL RECEPTION OF EIGHT LARGE DEEP BOREHOLES IN THE TOWN OF OUIDAH, AS PART OF THE COMPLETE PRELIMINARY DESIGN AND SUPERVISION STUDIES FOR THE SUPPLY OF DRINKING WATER OF 21 TOWNS IN BENIN, IBT/CIRA, NATIONAL BUDGET, MINISTRY IN CHARGE OF WATER, YEAR 2021-2022**



**DRINKING WATER SUPPLY WORKS WITH THE LAYING  
OF A 14.000 LINEARS METERS OF HDPE PIPE IN  
ATLANTIQUE, BENIN, YEARS 2020-2021**



**DRINKING WATER SUPPLY WORKS WITH THE LAYING  
OF 14.000 LINEAR METERS OF HDPE PIPE IN THE  
ATLANTIC REGION IN BENIN. YEAR 2020-2021**



**VISIT OF THE PRESIDENT OF BOAD TO THE CONSTRUCTION SITE OF DRINKING WATER SUPPLY WORKS WITH THE CONSTRUCTION OF THREE PUMPING STATIONS (160kva GENERATORS) IN THE ATLANTIC REGION IN BENIN. YEAR 2021-2022.**



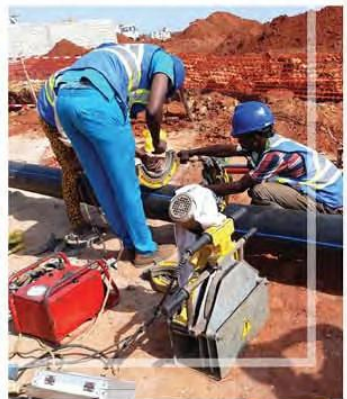
**DRINKING WATER SUPPLY WORKS WITH  
CONSTRUCTION OF A 350m<sup>3</sup> WATER TOWER IN  
COUFFO, BENIN, YEARS 2020-2021**



**DRINKING WATER SUPPLY WORKS WITH  
CONSTRUCTION OF A 1000m<sup>3</sup> WATER TOWER IN  
COUFFO, BENIN, YEARS 2020-2021**



**DRINKING WATER SUPPLY WORKS WITH THE REALISATION  
OF THREE LARGE BOREHOLES STUDIES AND WORKS) IN  
THE ATLANTIC REGION IN BENIN. YEAR 2020.**



**DRINKING WATER SUPPLY WORKS WITH THE  
CONSTRUCTION OF THREE PUMPING STATIONS (160kva  
GENERATORS) IN THE ATLANTIC REGION IN BENIN. 2020**





**DRINKING WATER SUPPLY WORKS WITH THE LAYING OF A 14.000 LINEARS METERS OF HDPE PIPE IN ATLANTIQUE, BENIN, YEARS 2020-2021**



**VISIT OF THE PRESIDENT OF BOD TO THE CONSTRUCTION SITE OF DRINKING WATER SUPPLY WORKS WITH THE CONSTRUCTION OF THREE PUMPING STATIONS (160kva GENERATORS) IN THE ATLANTIC REGION IN BENIN, YEAR 2022**



**DRINKING WATER SUPPLY WORKS WITH CONSTRUCTION OF A 30m<sup>3</sup> WATER TOWER IN ZOU, BENIN, FIELD VISIT OF FINANCIAL PARTNER CORIS BANK INTERNATIONAL, YEARS 2020-2021**



**CONSTRUCTION WORK ON DRINKING WATER SUPPLY SYSTEMS  
(SAEP) IN THE DEPARTEMENTS OF ZOU AND COUFFO IN BENIN,  
ANAEPMR, YEAR 2022.**





**Dedication  
Assurance  
Quality**

## Somes of our patners on projects



INTERNATIONAL HYDROSUD



## VISIT TO THE SITE OF DRINKING WATER SUPPLY WORKS BY THE MINISTER OF LIVING ENVIRONMENT



## RECEPTION OF THE DRINKING WATER SUPPLY WORKS IN BOUKOUMBE IN THE NORTH OF BENIN



## VISIT TO THE SITE OF DRINKING WATER SUPPLY WORKS BY THE MINISTER OF LIVING ENVIRONMENT



## VISIT TO THE SITE OF DRINKING WATER SUPPLY WORKS BY THE MINISTER OF LIVING ENVIRONMENT



Faire Affaires avec le Secrétariat de l'Organisation des Nations Unies

Information and Registration Workshop for Economic Operators in Benin to do Business with the UN

**COTONOU NOVOTEL HOTEL, AUGUST 18 AND 19. 2016**

**IBT was registered among the UN system seller in the world**



**INTERNATIONAL  
BUILDING AND TRADE**

**Dedication - Assurance - Quality**



**The General Manager  
of IBT in consultation with the  
President of the inter profession  
of the BTP sector in Benin**

**Executive Management: Lot 2135 Land "L" Mènantin, Cotonou-Benin  
Tel: (229) 21 38 38 32 / 95 96 49 00 / 97 39 51 10 / 97 61 90 70 - 10BP1021  
contact@ibt-sarl.com /website. www.ibt-sarl.com**